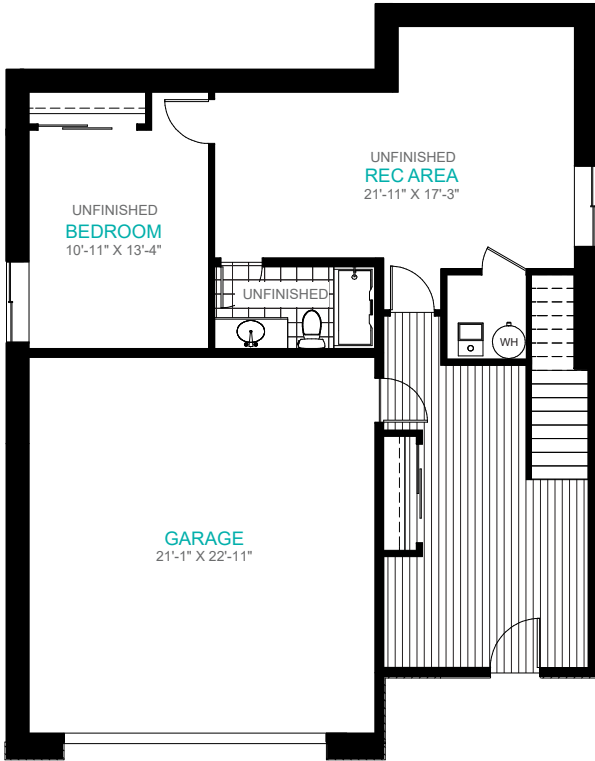




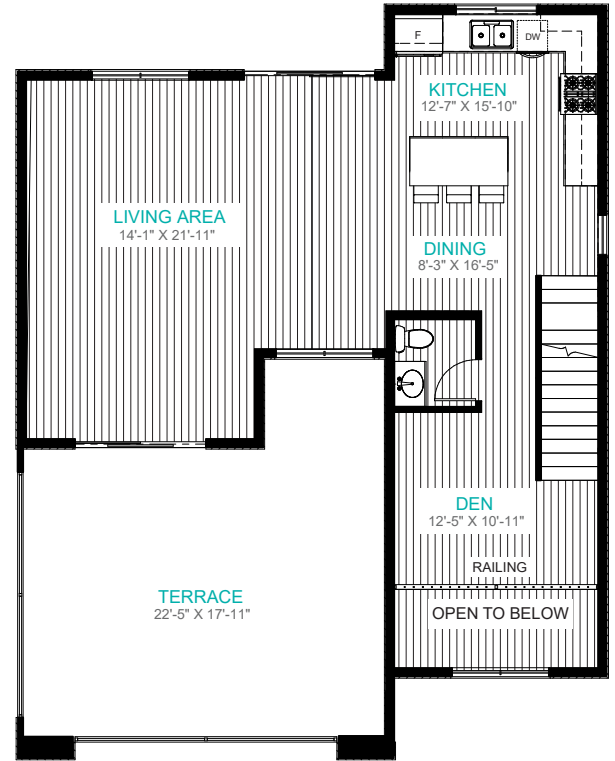
**The Trails**  
MODERN HILLSIDE LIVING

# THE WESTCOAST

THE **TRAILS**LIVING.CA



LOWER LEVEL



MAIN FLOOR

## TOTAL SQUARE FOOTAGE

2,793 Sq Ft

### LOWER LEVEL

888 Sq Ft

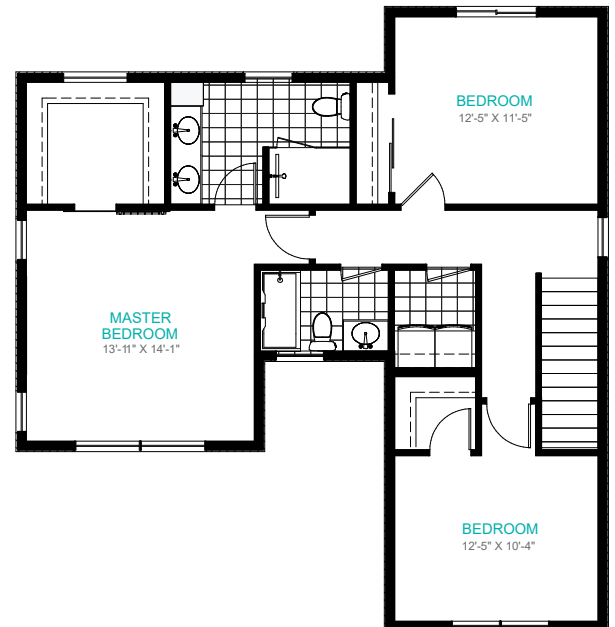
(597 sq.ft. unfinished)

### MAIN LEVEL

958 Sq Ft

### SECOND FLOOR

947 Sq Ft



SECOND FLOOR

12-R1-H

All square footage and room sizes are approximate and may not be exactly as shown. The developer and builder reserve the right to make modifications deemed necessary in order to maintain the high standards of the development and meet all applicable codes. Rooms may vary slightly from the preliminary plans to the final survey. E&OE.