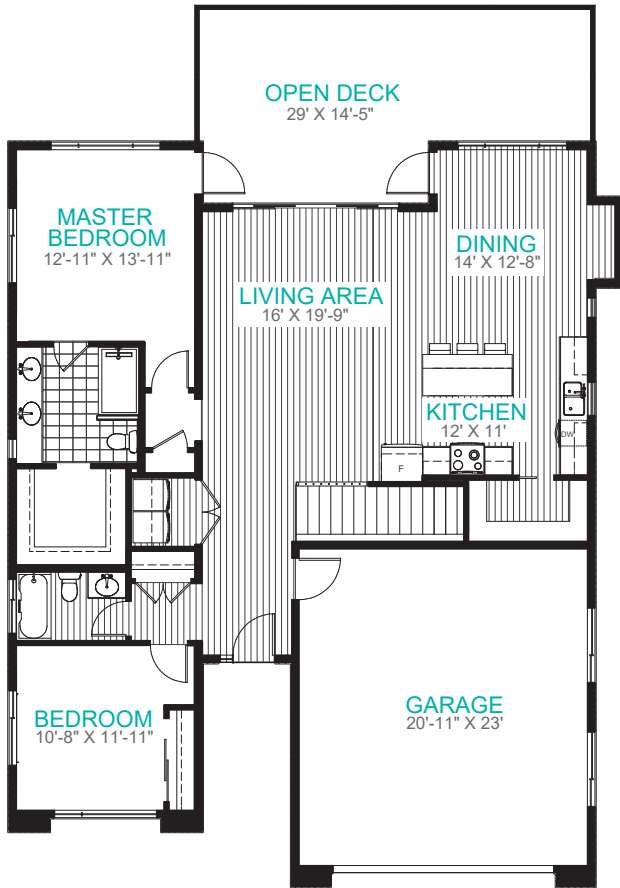




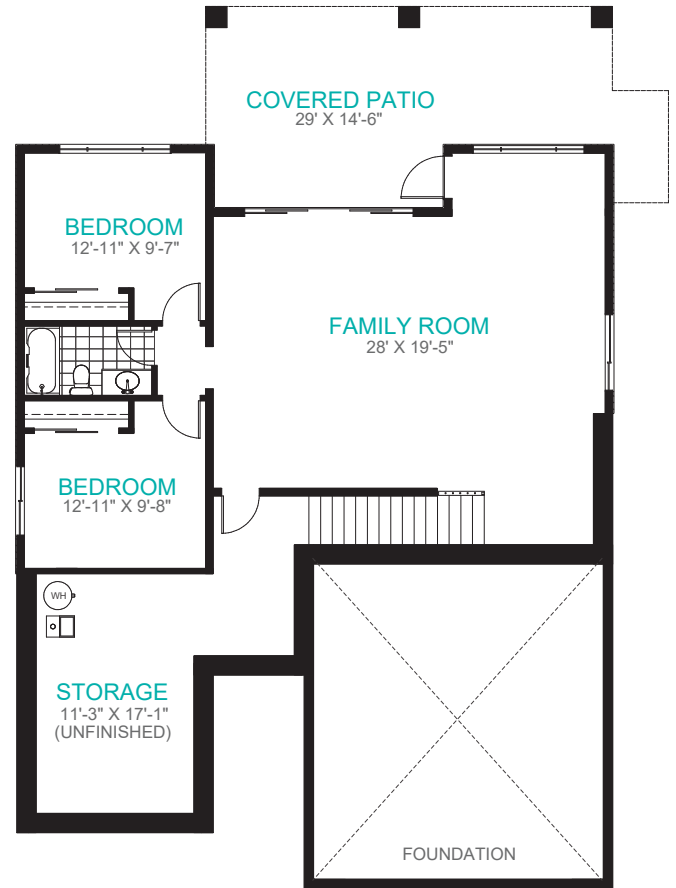
The Trails
MODERN HILLSIDE LIVING

THE PANIER

THETRAILSLIVING.CA



MAIN LEVEL



LOWER LEVEL

3-R1-C

TOTAL SQUARE FOOTAGE

2,940 Sq Ft

MAIN LEVEL

1,507 Sq Ft

LOWER LEVEL

1,433 Sq Ft
(597 sq ft unfinished)



ELEVATION A



ELEVATION B

All square footage and room sizes are approximate and may not be exactly as shown. The developer and builder reserve the right to make modifications deemed necessary in order to maintain the high standards of the development and meet all applicable codes. Rooms may vary slightly from the preliminary plans to the final survey. E&OE.