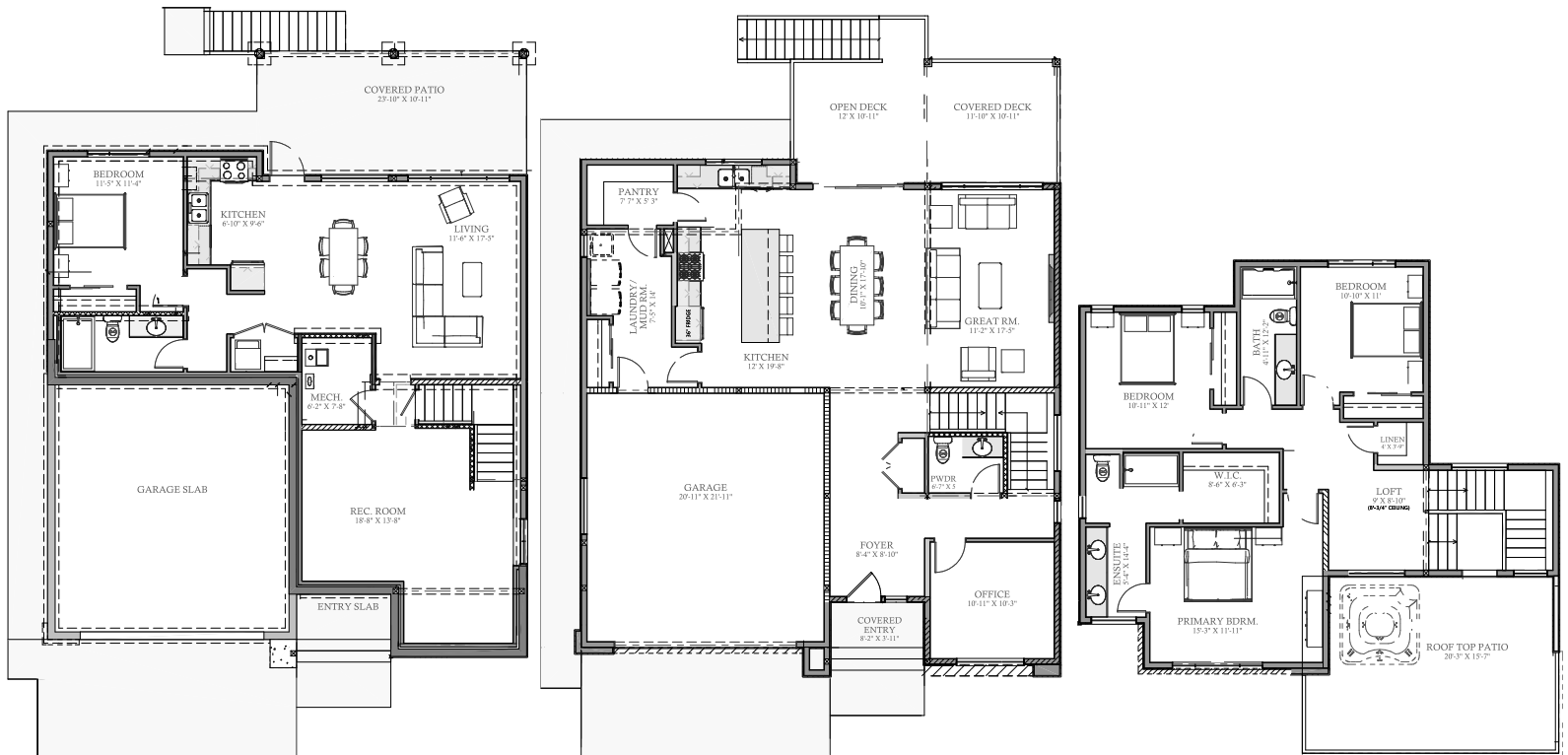


The Trails
MODERN HILLSIDE LIVING

THE AUBURN

THETRAILSLIVING.CA



BASEMENT LEVEL

MAIN LEVEL

SECOND LEVEL



TOTAL SQUARE FOOTAGE

3,359 Sq. Ft. finished

MAIN FLOOR

Main Floor: 1,257 Sq Ft

SECOND FLOOR

1001 Sq Ft

BASEMENT FLOOR

1101 Sq Ft

LEGAL SUITE

770 Sq Ft

All square footage and room size are approximate and may not be exactly as shown. The developer and builder reserve the right to make modifications deemed necessary in order to maintain the high standards of the development and meet all applicable codes. Rooms may vary slightly from the preliminary plans to the final survey. E&OE.