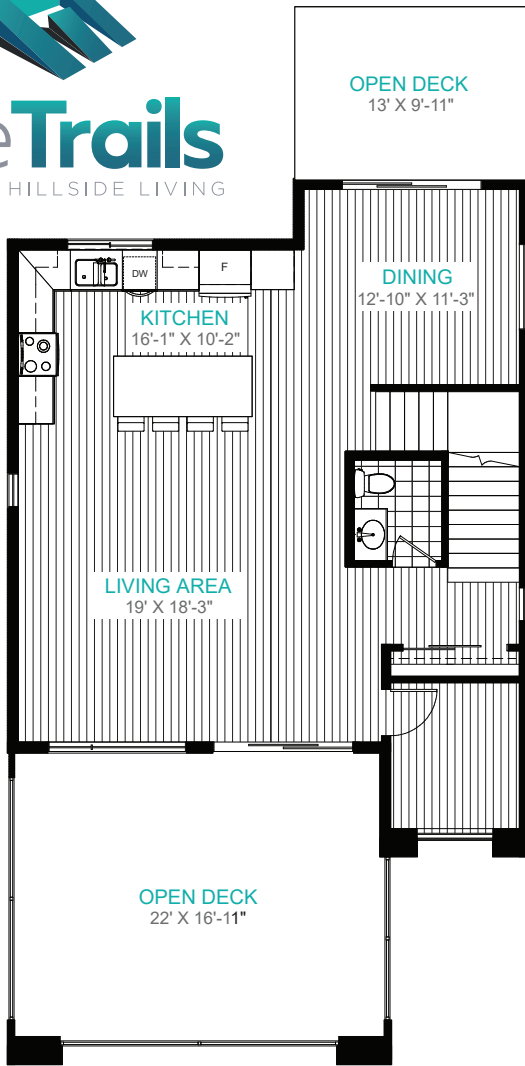




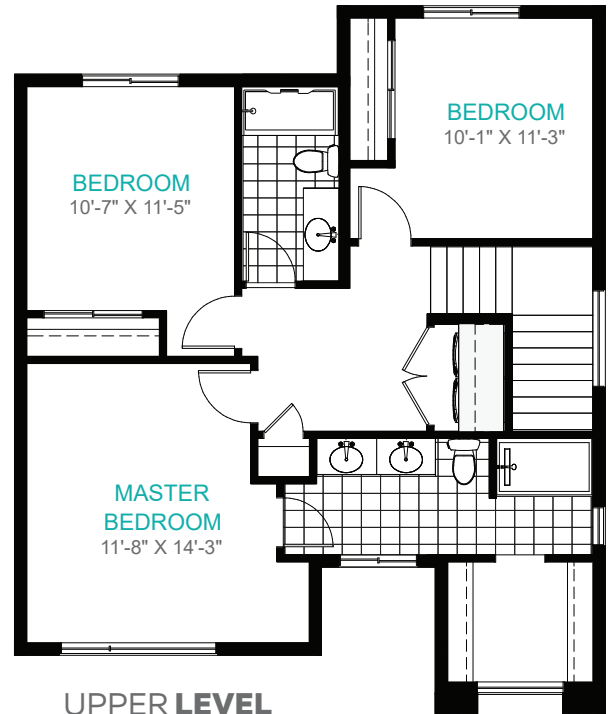
The Trails
MODERN HILLSIDE LIVING

THE BOWES

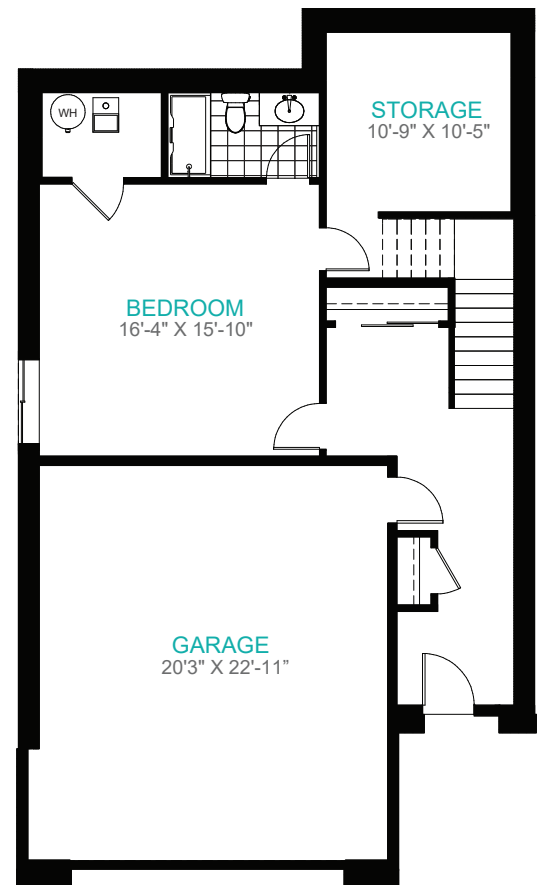
THE **TRAILS**LIVING.CA



MAIN LEVEL



UPPER LEVEL



ENTRY LEVEL

RC3-D

TOTAL SQUARE FOOTAGE

2,638 Sq Ft

MAIN LEVEL

975 Sq Ft

UPPER LEVEL

863 Sq Ft

ENTRY LEVEL

800 Sq Ft
(520 sq.ft. unfinished)



All square footage and room sizes are approximate and may not be exactly as shown. The developer and builder reserve the right to make modifications deemed necessary in order to maintain the high standards of the development and meet all applicable codes. Rooms may vary slightly from the preliminary plans to the final survey. E&OE.